

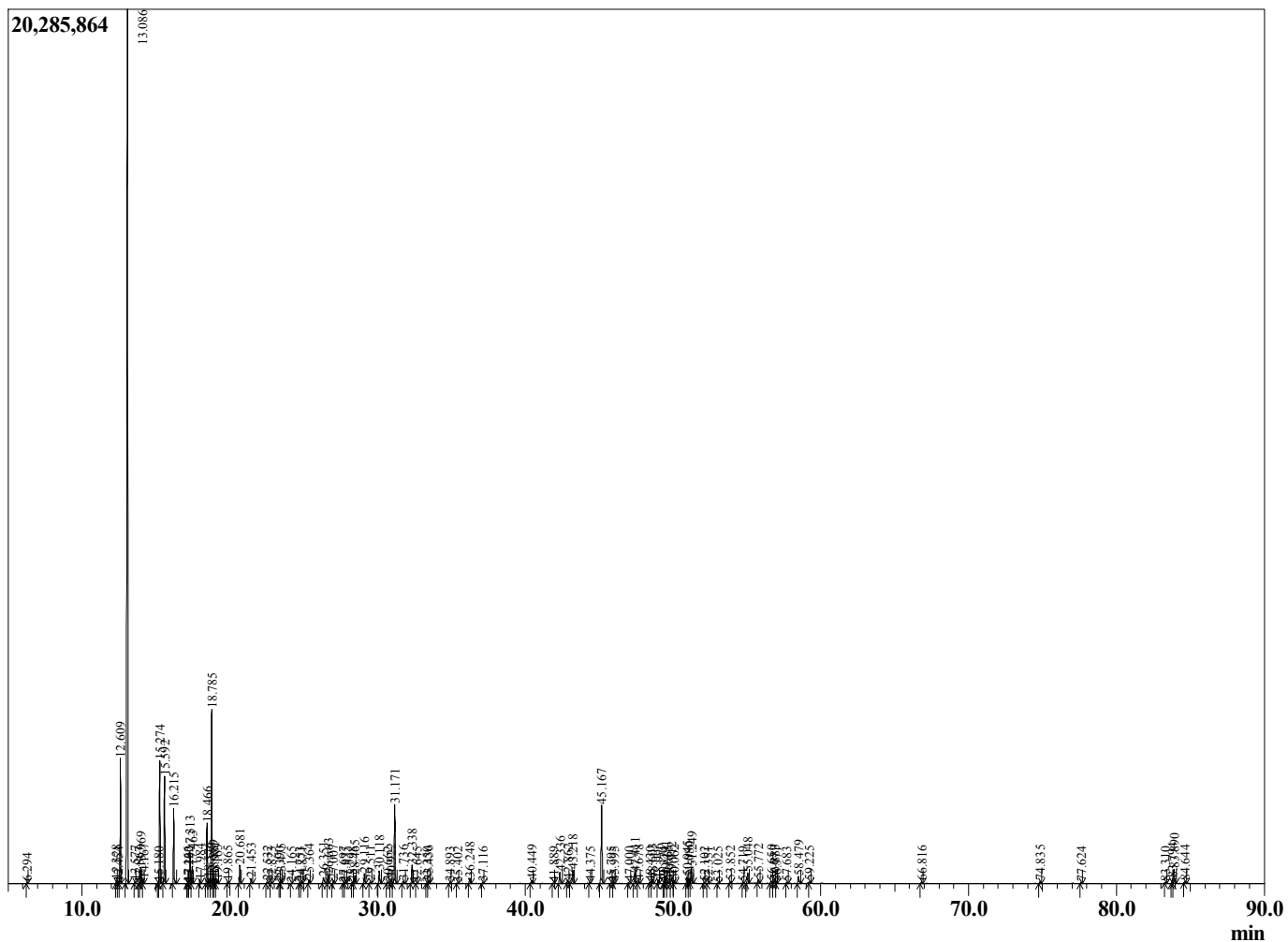
Sample Information

Sample Type : Essential Oil
 Sample Name : Boswellia carterii
 Injection Volume : 0.10

Frankincense Carterii Premium
 Lot# SOK4-KT
 Country: Somalia



Chromatogram Boswellia carterii



R.Time	Name	Area%
6.294	Toluene	0.04
12.328	Hashishene	0.12
12.454	Tricyclene	0.06
12.609	alpha-Thujene	4.79
13.086	alpha-Pinene	43.51
13.577	Thujadiene isomer	0.08
13.867	alpha-Fenchene	0.03
13.969	Camphene	0.60
14.167	Thuja-2,4(10)diene	0.17
15.180	Unidentified	0.04
15.274	Sabinene	5.03
15.592	beta-Pinene	4.39
16.215	Myrcene	3.10
17.166	Pseudolimonene	0.03
17.222	Unidentified	0.04
17.313	alpha-Phellandrene	1.35
17.463	delta-3-Carene	0.69
17.984	alpha-Terpinene	0.15
18.466	para-Cymene	2.53
18.576	Octyl methyl ether	0.23
18.785	Limonene	7.66
18.889	beta-Phellandrene	0.32
18.981	1,8-Cineole	0.23
19.163	cis-beta-Ocimene	0.15
19.865	trans-beta-Ocimene	0.09
20.681	gamma-Terpinene	0.84
21.453	1-Octanol	0.26
22.532	Terpinolene	0.11
22.823	para-Cymenene	0.08
23.390	Perillene	0.04
23.475	Linalool	0.21
24.165	Unidentified	0.04
24.753	beta-Thujone	0.08
24.871	Myrcenol	0.06
25.364	alpha-Campholenal	0.16
26.351	trans-Pinocarveol	0.41
26.663	trans-Verbenol	0.42
27.007	alpha-Phellandren-8-ol	0.16
27.697	Pinocamphone	0.03
27.835	Pinocarvone	0.04
28.298	Unidentified	0.05
28.465	para-Mentha-1,5-dien-8-ol	0.44
29.116	Terpinen-4-ol	0.48
29.511	para-Cymen-8-ol	0.10
30.118	alpha-Terpineol	0.73
30.662	alpha-Phellandrene epoxide	0.07
30.922	Verbenone	0.22
31.171	Octyl acetate	3.98
31.736	trans-Carveol	0.14
32.338	Decyl methyl ether	0.92
32.645	cis-Carveol	0.04
33.350	Cuminal	0.04
33.436	Carvone	0.11
34.893	Unidentified	0.05
35.402	Decanol	0.03
36.248	Bornyl acetate	0.27

R.Time	Name	Area%
37.116	Carvacrol	0.04
40.449	alpha-Cubebene	0.19
41.889	Cyclosativene	0.04
42.336	alpha-Copaene	0.60
42.862	beta-Bourbonene	0.19
43.218	beta-Elemene	0.78
44.375	alpha-Gurjunene	0.06
45.167	beta-Caryophyllene	4.33
45.795	beta-Copaene	0.03
45.995	trans-alpha-Bergamotene	0.05
47.000	trans-Murrola-3,5-diene	0.08
47.411	alpha-Humulene	0.58
47.678	Alloaromadendrene	0.13
48.430	10-beta-H-Cadina-1(6),4-diene	0.10
48.603	trans-Cadina-1(6),4-diene	0.25
48.996	Germacrene D	0.18
49.374	delta-Selinene	0.04
49.491	beta-Selinene	0.36
49.665	trans-Muurolo-4(14),5-diene	0.13
49.912	alpha-Selinene	0.41
50.062	alpha-Muuroloene	0.16
50.945	gamma-Cadinene	0.35
51.080	Cubebol	0.26
51.249	delta-Cadinene	0.84
52.102	trans-Cadine-1,4-diene	0.04
52.351	alpha-Cadinene	0.04
53.025	Elemol	0.05
53.852	Unidentified	0.08
54.719	Spathulenol	0.04
55.048	Caryophyllene oxide	0.62
55.772	Viridiflorol	0.21
56.650	Humulene epoxide II	0.19
56.883	10-epi-gamma-Eudesmol	0.17
56.971	1,10-di-epi-Cubenol	0.05
57.683	1-epi-Cubenol	0.06
58.479	tau-Cadinol	0.46
59.225	alpha-Eudesmol	0.11
66.816	Phellandrene dimer	0.11
74.835	Elemene dimer	0.14
77.624	Unidentified	0.06
83.310	Neocembrene A	0.06
83.794	Incensole	0.21
83.890	Serratol	0.91
84.644	Incensyl acetate	0.12
		100.00